

SONY

Car Stereo
Service Bulletin

Sony Service Company Technical Services
A Division of Sony Corporation of America
Sony Drive, Park Ridge, New Jersey 07656

Model: XR-5500

No. 211

Subject: Part Number Correction: BT-601 Lithium Battery

Date: September 20, 1991

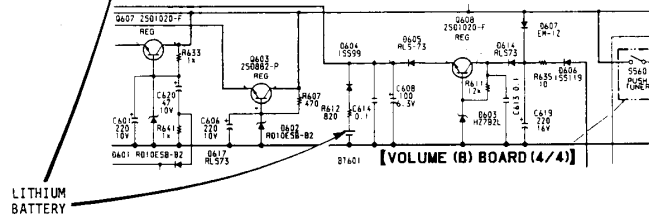
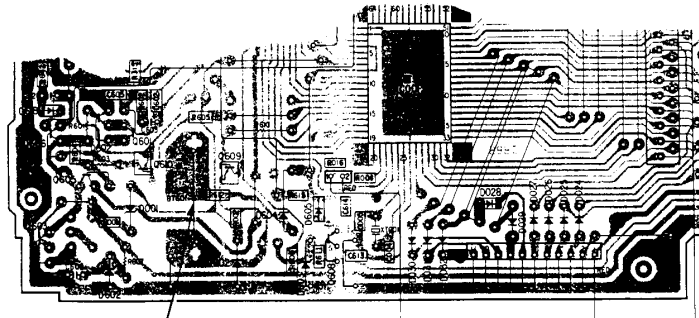
Symptom:
(**)

The part number shown in the Service Manual for Lithium Battery BT-601 is incorrect.

Solution:

Please make the following correction on page 27 of you Service Manual:

REF. NO.	DESCRIPTION	PART NUMBER	
		INCORRECT	CORRECT
BT-601	BATTERY, LITHIUM	1-528-225-11	1-528-225-31



CSA-14 Tuner Tape Deck

Reference: FPR M2115

PRINTED IN U.S.A.
CSA-14991-1